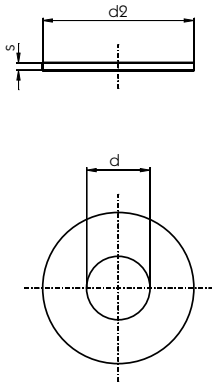


Mudguard washers

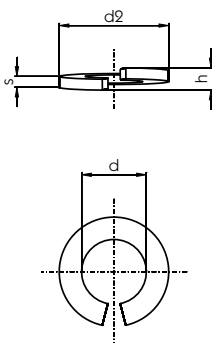


Mudguard washers
Tolerance DIN 522 c, zinc plated,
chafed, uncoloured passivated.



Dim. d x d2 x s [mm]	Qty. [piece]	
5.3 x 20 x 1.25	200	965987128
5.3 x 25 x 1.25	200	965987129
6.4 x 20 x 1.25	200	965987131
6.4 x 25 x 1.25	200	965987132
6.4 x 30 x 1.25	200	965987133
6.4 x 35 x 1.25	200	965987145
6.4 x 40 x 1.25	200	965987146
8.4 x 20 x 1.25	200	965987134
8.4 x 25 x 1.25	200	965987135
8.4 x 30 x 1.25	200	965987136
8.4 x 35 x 1.25	200	965987137
8.4 x 40 x 1.25	200	965987147
10.5 x 25 x 1.25	200	965987138
10.5 x 30 x 1.25	200	965987139
10.5 x 40 x 1.25	200	965987141
12.5 x 35 x 1.25	200	965987143
12.5 x 40 x 1.25	200	965987144

Spring lock washers



Spring lock washers
DIN 127 A, zinc plated.



Size	For thread	Dim. d [mm]	Dim. d2 [mm]	Dim. h [mm]	Dim. s [mm]	Qty. [piece]
A5	M5	5.1	9.2	3.2	1.2	1000
A6	M6	6.1	11.8	4.2	1.6	1000
A8	M8	8.1	14.8	5.4	2.0	1000
A10	M10	10.2	18.1	5.9	2.2	1000
A12	M12	12.2	21.1	6.8	2.5	500
A14	M14	14.2	24.1	8.0	3.0	500
A16	M16	16.2	27.4	9.2	3.5	250
A20	M20	20.2	33.6	10.4	4.0	100
A24	M24	24.5	40.0	13.0	5.0	100