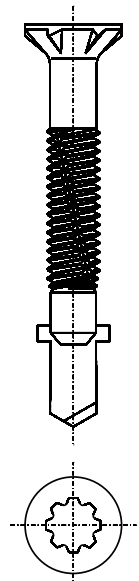


Self drilling fastener wood to aluminium with TORX T40 drive

Attaching semi-hardwood or hardwood to 5-10 mm aluminium crossmembers. Max. thickness of all materials fastened 38 mm, size 8.3 x 65 mm, Durocoat coated, qty. 100 pieces.

973963677



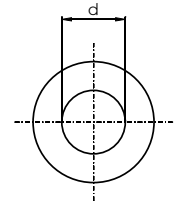
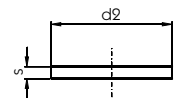
Washers and spring lock washers
Washers



Washers

DIN 125, zinc plated, 104 HV.

Dim. d [mm]	For thread	Dim. d2 [mm]	Dim. s [mm]	Qty. [piece]	
5.3	M5	10	1.0	1000	965987030
6.4	M6	12	1.6	1000	965987031
8.4	M8	16	1.6	1000	965987032
10.5	M10	20	2.0	1000	965987033
13	M12	24	2.5	500	965987034
15	M14	28	2.5	500	965987035
17	M16	30	3.0	250	965987036
21	M20	37	3.0	200	965987037
25	M24	44	4.0	100	965987038



Washers

DIN 9021 A, zinc plated, 100 HV.

Dim. d x d2 [mm]	For thread	Dim. s [mm]	Qty. [piece]	
5.3 x 15	M5	1.2	250	965987264
6.4 x 18	M6	1.6	250	965987265
8.4 x 24	M8	2	100	965987266
10.5 x 30	M10	2.5	100	965987267
13 x 37	M12	3	100	965987268
15 x 44	M14	3	100	965987269
17 x 50	M16	3	100	965987270
22 x 50	M20	4	100	965987272

