

MultiFixx load securing system

Safe and form-fitting load securing at any point of the structure:
The MultiFixx crossmember make load securing part of the vehicle construction and to an alternative to existing products on the market.

When using floor frames with integrated lashing ring or lashing eyes, a system platform is created in combination with the MultiFixx crossmembers, with which a wide variety of safety tasks can be solved.

MultiFixx crossmembers are tested as lashing point stop according to DIN EN 12640 and in combination with floor group certified to DIN EN 12642 XL.

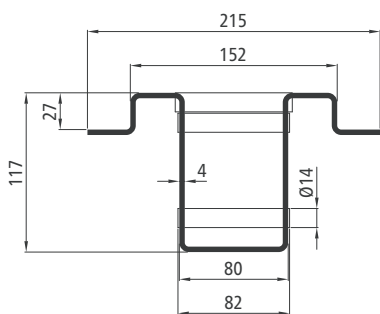
**Introduction
SALE***



MultiFixx crossmembers

Self-coloured steel, welding version. With receptions for stanchions 70 x 70 mm.

	Model	Length [mm]	Weight [kg]	LC [daN]	For floor frame outside width [mm]	Number of receptions
605646560	① Basic	2542	45,04	2000	2550	29
605646561	② SU-1	2472	43,02	2000	2480	28



Suitable for Suer floor frames 561434, 561437 and 561810.



MultiFixx longitudinal chassis member Basic

Self-coloured steel, welding version. For welding installation between two MultiFixx crossmembers Basic or SU-1.

	Length [mm]	Weight [kg]	LC [daN]
605646562	③ 572	9,16	2000

* The prices are valid net prices until 02/28/2018.